

Contents

Anatomy 2

- Central Nervous System
- Cranial Nerves
- Afferent Nervous System
- Autonomic Nervous System

Histology 5

- Cells
- Central Nervous System
- Peripheral Nervous System
- Eye
- Ear

Physiology 11

- Reflexes
- Somatic Nervous System
- Autonomic Nervous System
- Neural Control
- Senses
- Pain

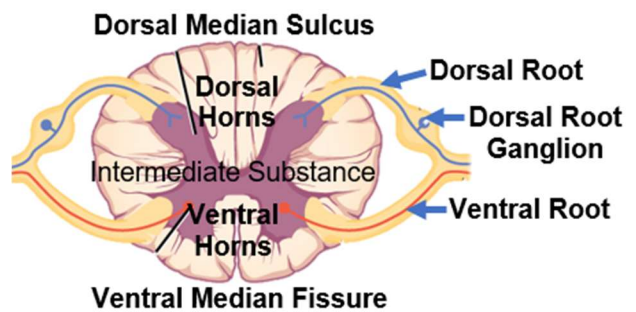
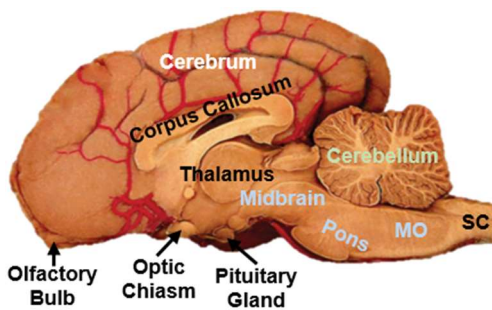
Anatomy

- **PNS Afferent Sensory** – somatic (conscious) + visceral (unconscious)
- **CNS** – brain + SC + optic n.
- **PNS Efferent Motor** – somatic + autonomic

Central NS

Brain

- Cerebrum, cerebellum and brainstem
- **Brainstem** – midbrain, pons and MO
- **Ventricles**
 - ❖ Brain – L lateral + R lateral + 3rd + 4th
 - ❖ Central canal – MO and SC

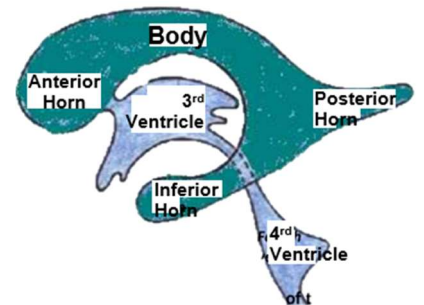


Spinal Cord

- Bilaterally symmetrical caudal continuation of the MO
- D & V nerve roots arise from functional segments that correspond to the vertebrae

CSF

- Clear, colourless fluid in the subarachnoid space and ventricles
- Choroid Plexus
 - ❖ An invagination of **pia mater** into the ventricles
 - ❖ Entry
 - Lateral – choroid fissure
 - 3rd and 4th – roof
- **Composition** – protein + glucose + chloride
- **Function** – metabolite removal, nourishment, protection and support



Meninges

- **Scalp + skull**
- **Dura mater**
 - ❖ Bilaminar – periosteal + meningeal
 - ❖ Closely united – only separate to form venous sinuses
- **Subdural space**
- **Arachnoid mater**
- **Subarachnoid space** – arachnoid trabeculae and blood vessels
- **Pia mater** – continues into sulci with blood vessels

