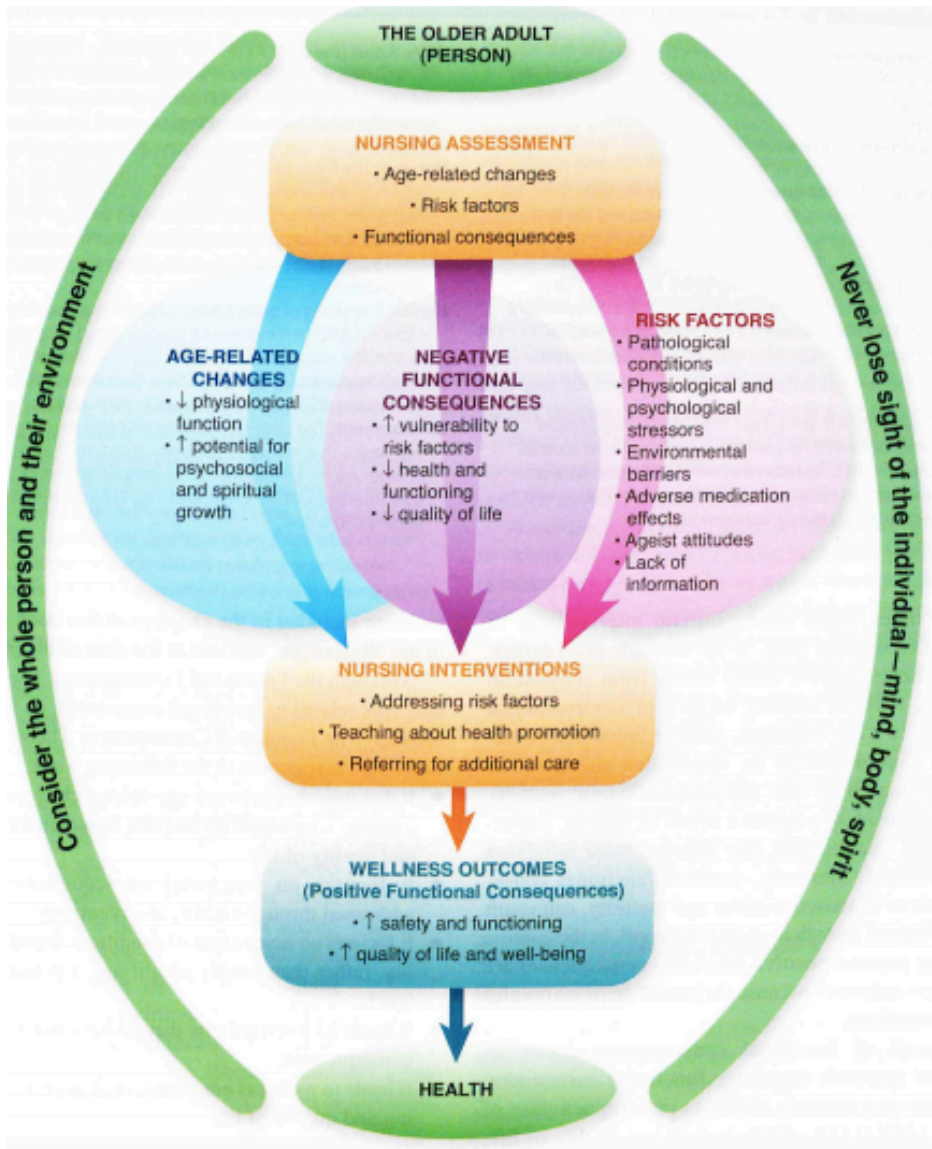


NRS259- PROM. HEALTH IN EXTENDED CARE

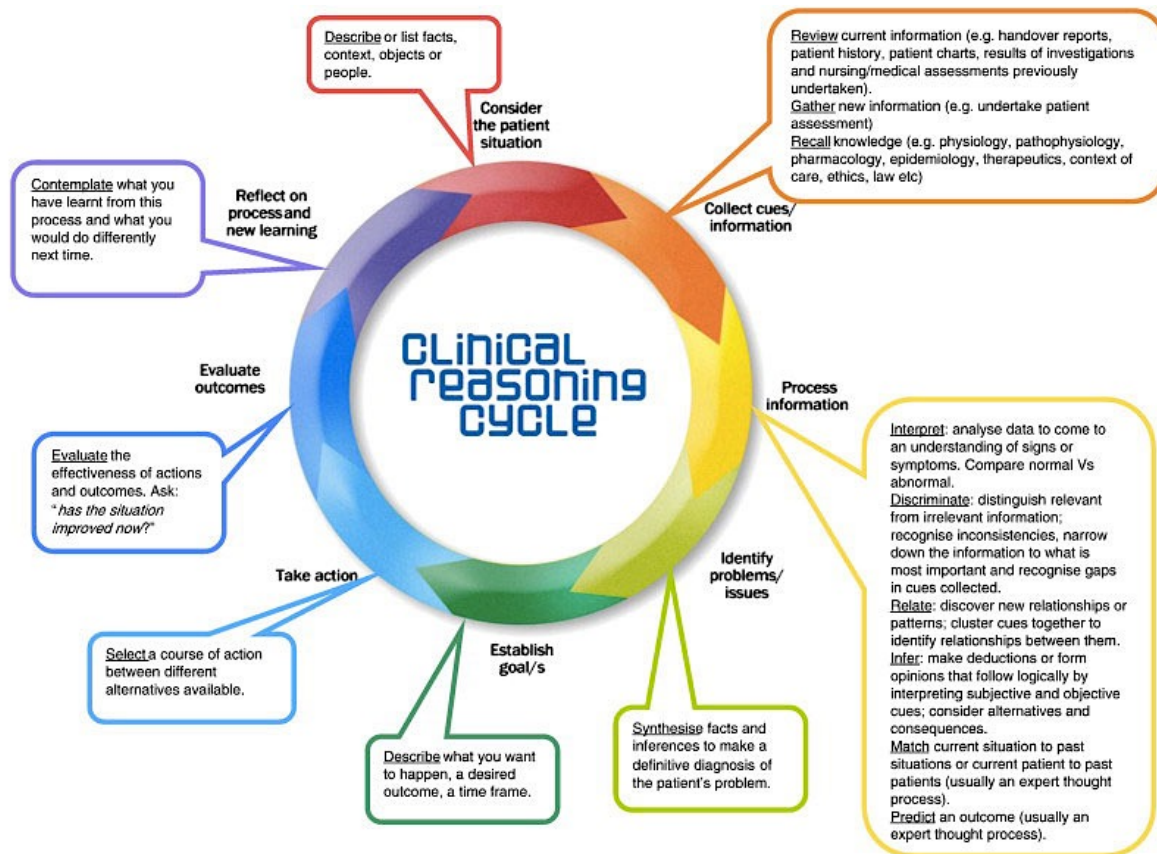
WEEK ONE-

Miller's functional consequences theory of healthy ageing



- Care is holistic- wellness more than physiological functions
- Age related changes have a different impact than diseases
- Negative consequences can occur (combination of age-related changes and risk factors)
- Health interventions can alleviate negative consequences
- Health promotion interventions are important
- Nursing intervention promotes positive outcomes

Levett-Jones' Clinical Reasoning Process



Eight-step process includes:

- First impression- what's the significance of what you're seeing? Identify the problem.
- Collect data- what's different from normal?
- Process collected information
- Decide on a pathway of care
- Plan appropriate care
- Act- implement a plan
- Evaluate- was this plan/intervention successful?
- Reflect- what could I have done differently for next time?

Clinical Reasoning Cycle

- A way of thinking

Functional Consequences Theory

- Impacts of ageing
- Risk factors (impacts of disease, medications, situation)

Priorities of Care

- Level of safety
- Level of independence
- Level of function