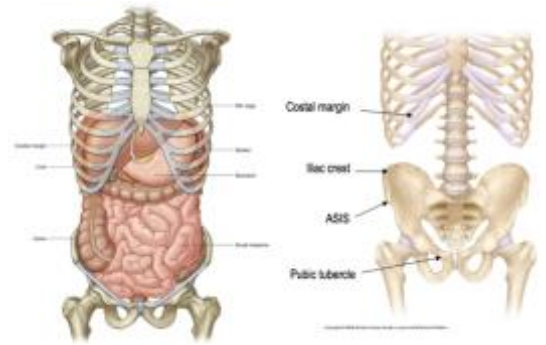


Lecture 67: Gastrointestinal system 1

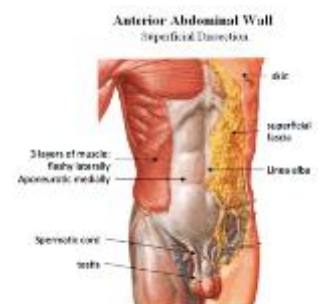
Bony Framework of Abdominal Wall

- Abdomen is a body trunk between the thorax and pelvis so the muscles supporting the abdomen attach to the bottom of the body thorax above and the top of the bony pelvis above.
- Xiphoid process provides attachment to abdominal wall muscles. The 12th rib also provides attachment.
- The bony pelvis has the following landmarks – top part of the hip bone is called the iliac crest. It extends posteriorly lateral and anteriorly. Anteriorly we can see the anterior superior iliac spine (ASIS) which is a bony bump. Provides attachment to anterior abdominal wall muscles. Inferior to that we have the anterior inferior iliac spine which provides bony attachment to lower limb muscles. Pubic bone is at the front the top part of the pubic bone is the pubic crest and laterally there is another bump called the pubic tubercle. They both provide attachment to anterior abdominal wall muscles.



Anterior Abdominal Wall Layers

- Skin
- Superficial fascia
- Beneath superficial fascia are muscles (paired, 3 flat and 2 vertical)
- All the 3 paired flat layered muscles are paired fleshy laterally and aponeurotic medially. Muscle fibres line laterally. Medially they are replaced by aponeurosis.
- Transversalis Fascia
- Extraperitoneal fascia (fat)
- Peritoneum



Muscles of Anterior Abdominal Wall

- External Oblique Muscles – immediately above. Flat layered
- Aponeurosis interdigitates at the midline to form the linear alba- raphe.
 - Superficial layer
 - Fiber direction: inferomedial
 - Attachments:
 - Superiorly: ribs (overlapping costal margins)
 - Medially: linear alba
 - Inferiorly:
 - Iliac crest and ASIS
 - Pubic tubercle and pubic crest
 - Posteriorly associated with posterior abdominal wall muscles



External oblique and inguinal ligament

- Insertions of inferior part of EO:
 - Lateral part attaches to iliac crest and ASIS
 - Central part is free, with no attachments – free inferior edge of the EO
 - Medial part attaches to the pubic tubercle and pubic crest

